

Acidentes ocorridos nas Rodovias Federais em 2005.

Rodovia BR 116 – MG

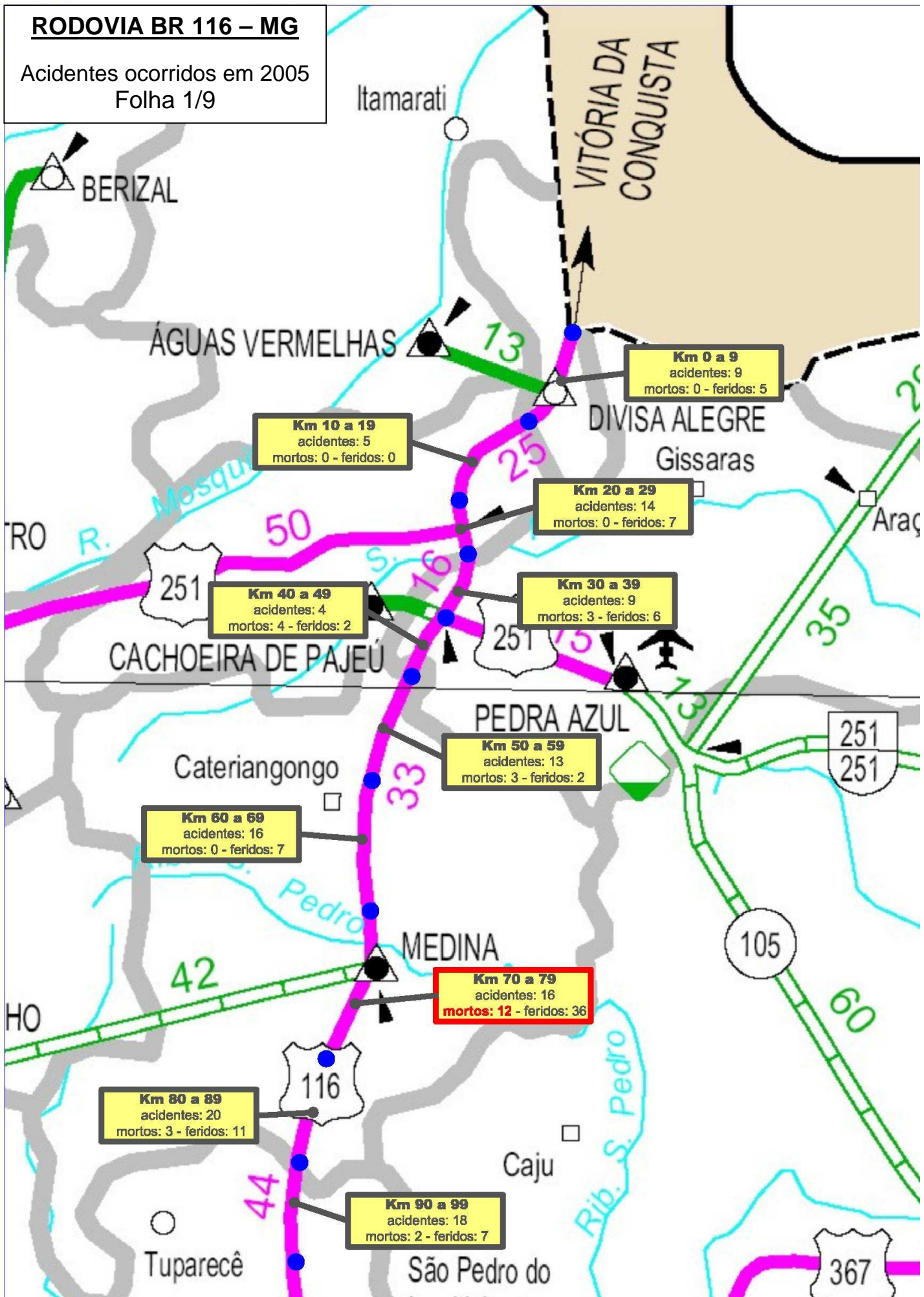
(Extensão 817 Km)

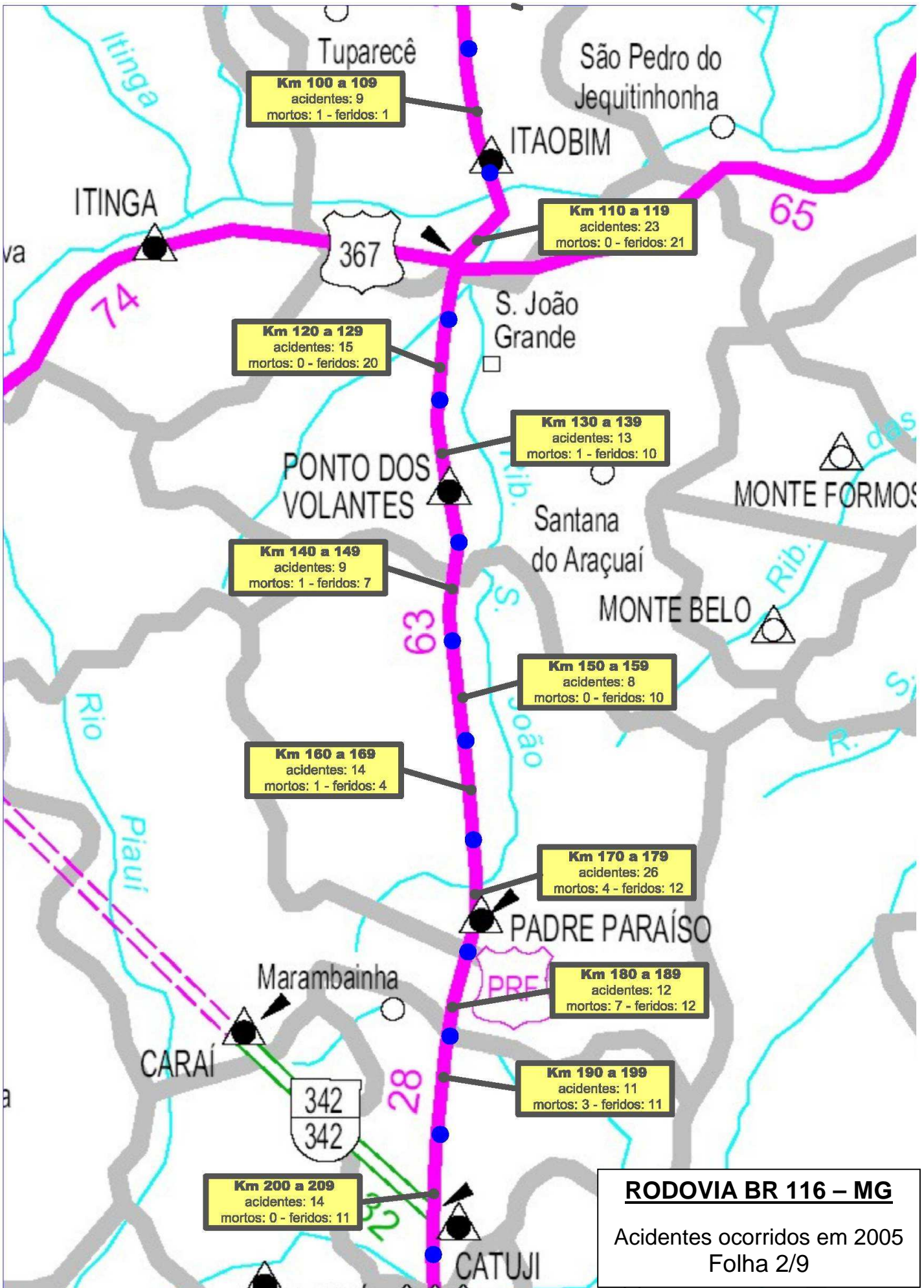
Resumo

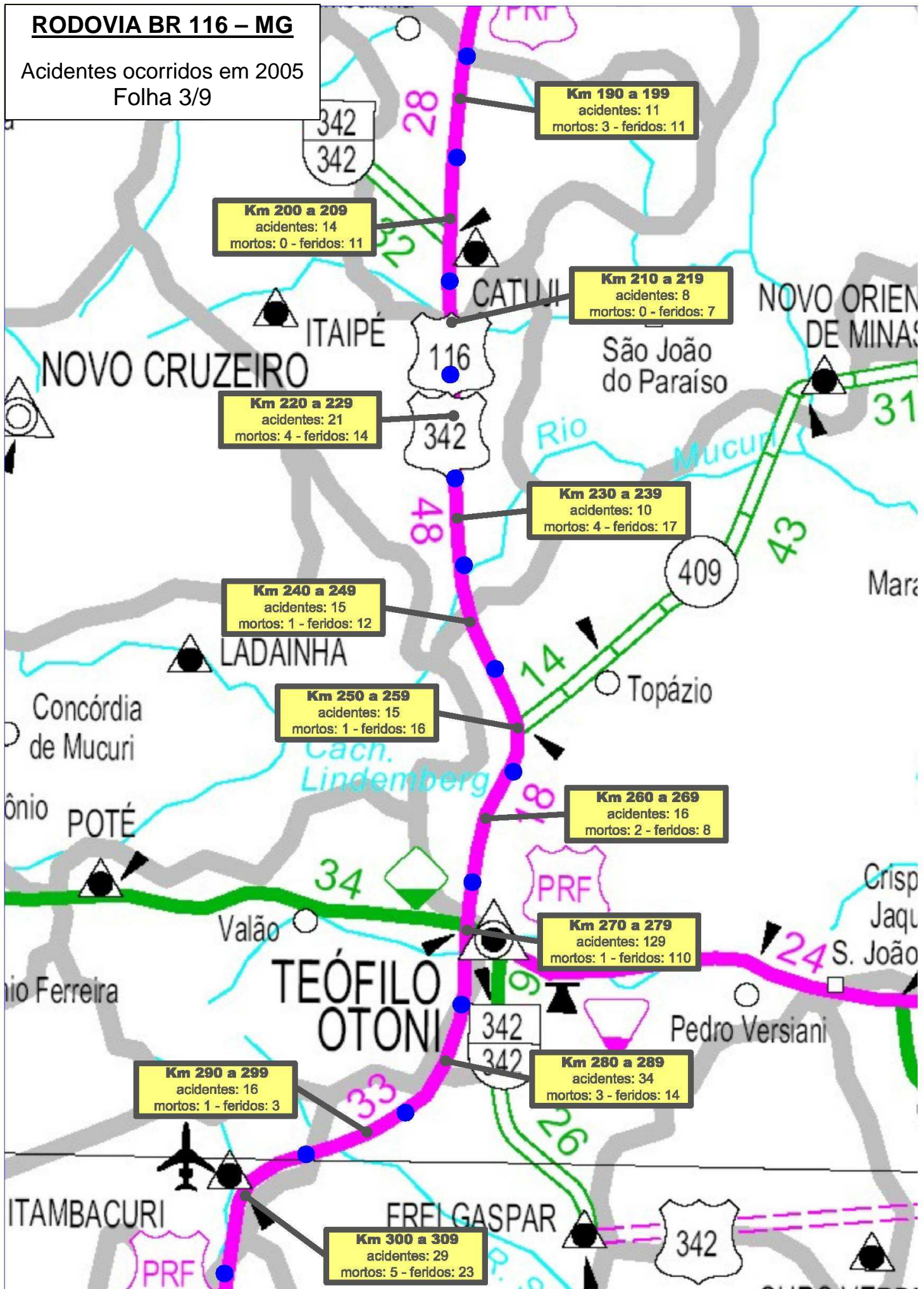
1.948 Acidentes

177 Vítimas Fatais

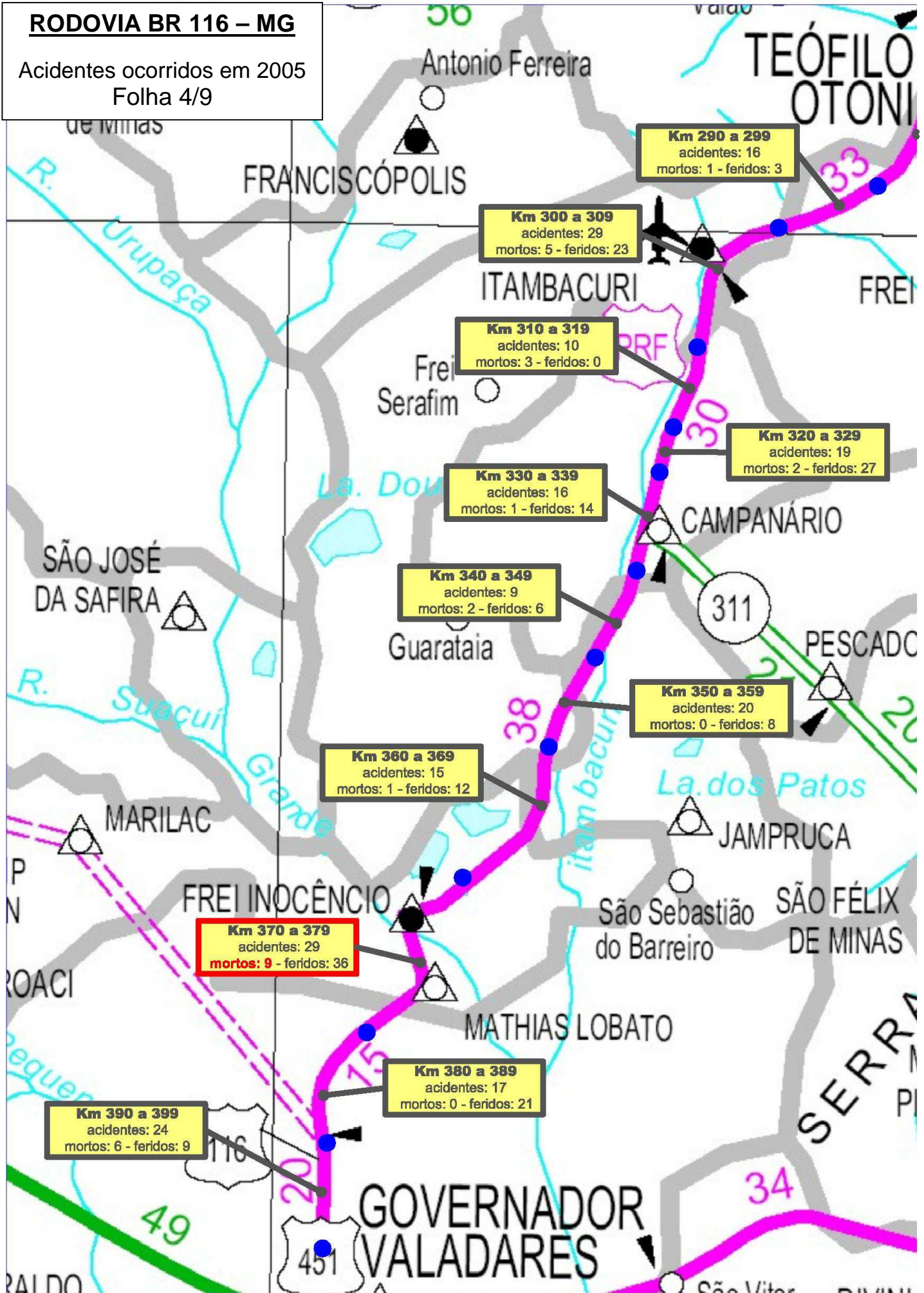
1.485 Feridos

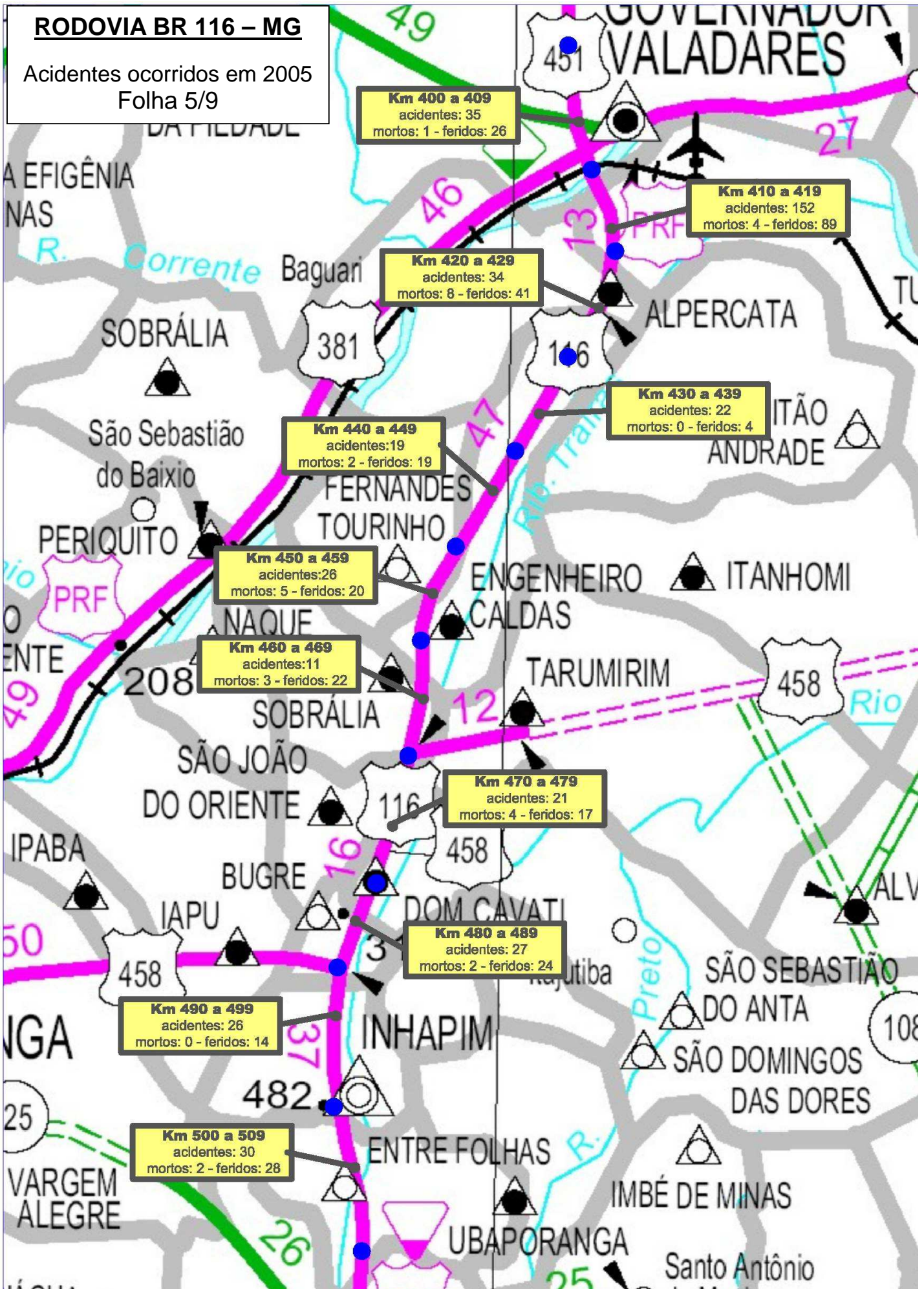




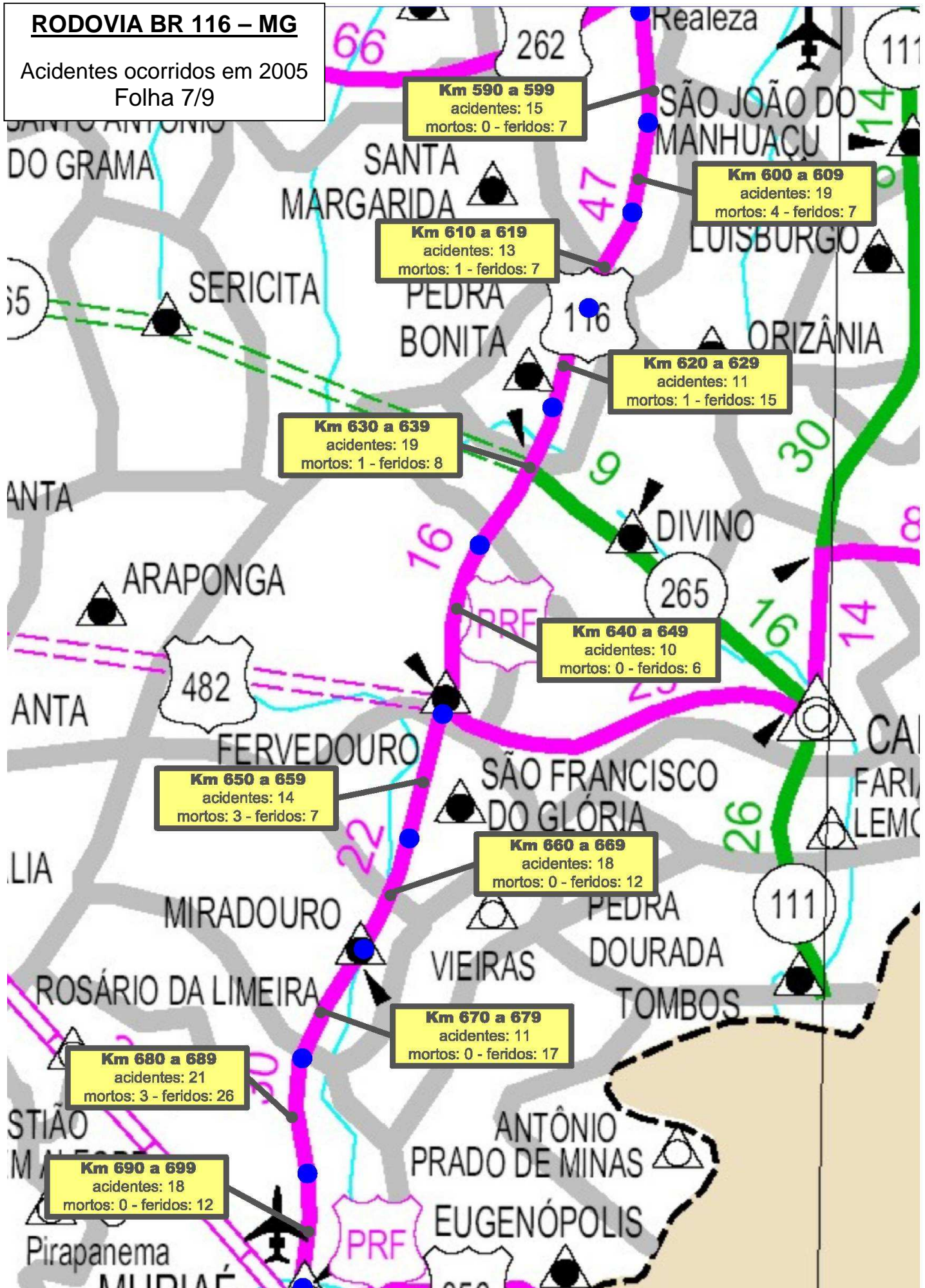


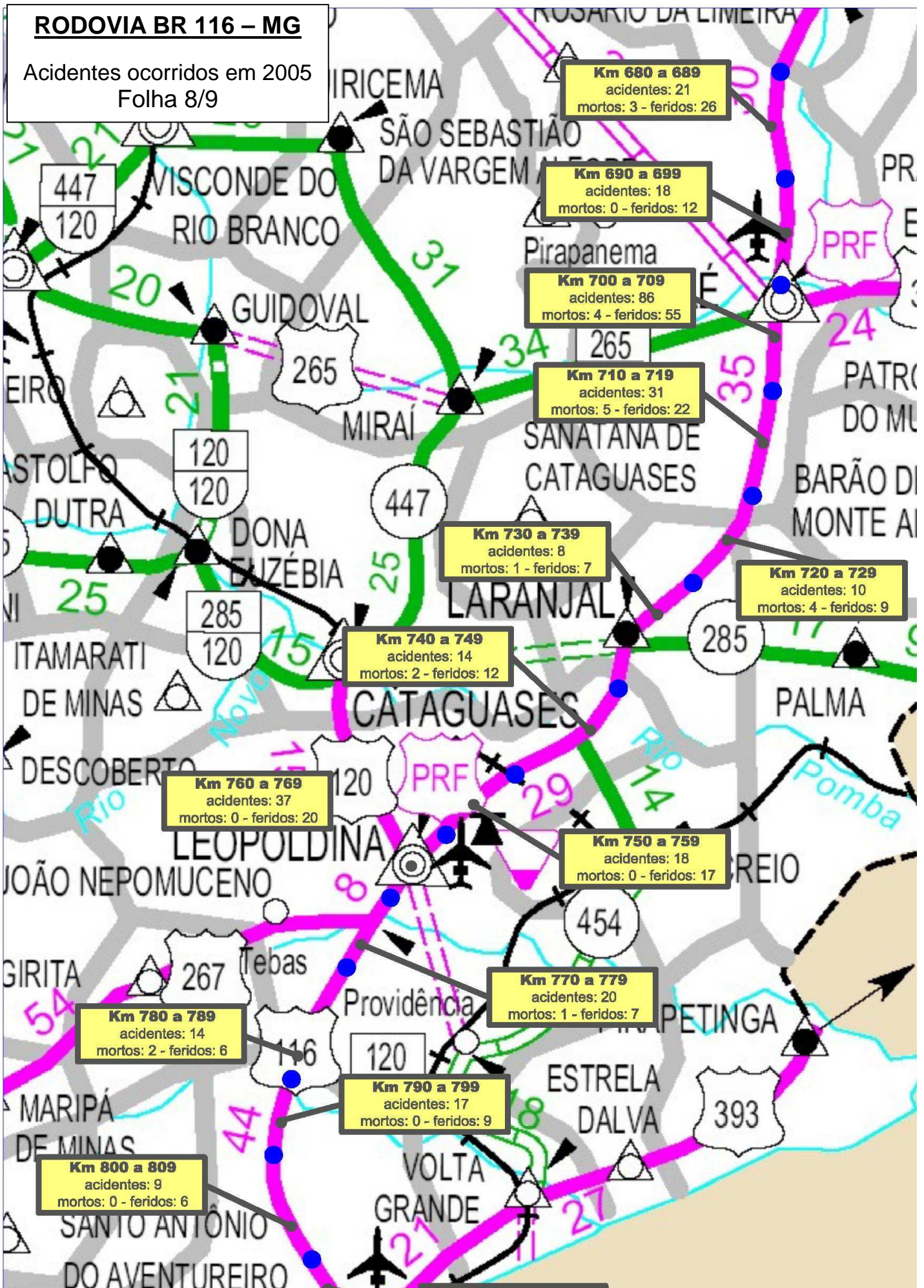
RODOVIA BR 116 – MG
 Acidentes ocorridos em 2005
 Folha 4/9









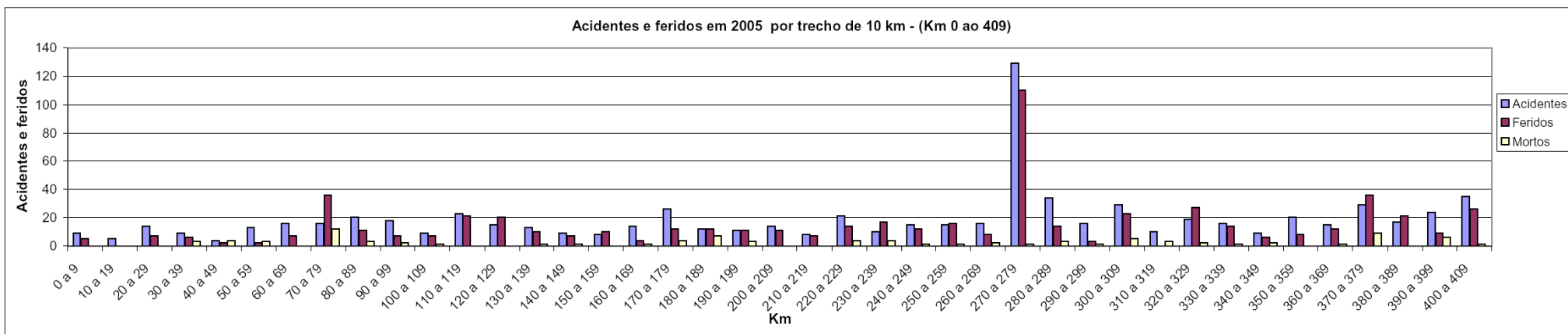




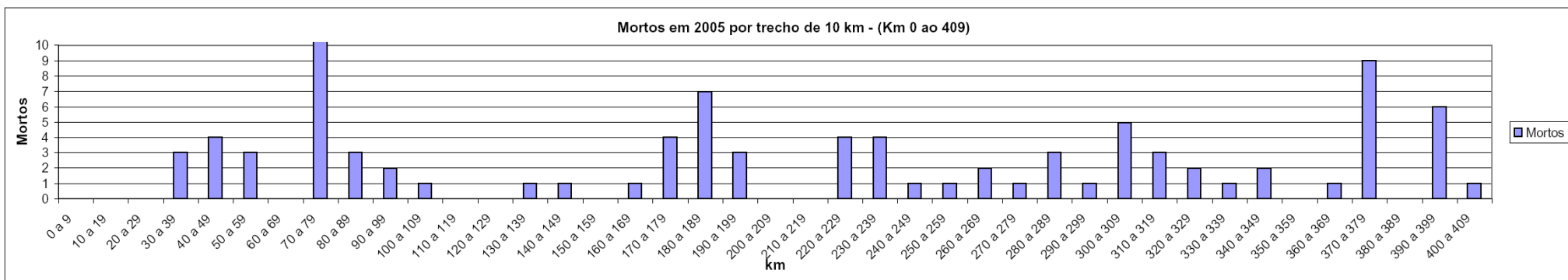
Rodovia BR 116 - MG

Acidentes ocorridos em 2005.

Km	0 a 9	10 a 19	20 a 29	30 a 39	40 a 49	50 a 59	60 a 69	70 a 79	80 a 89	90 a 99	100 a 109	110 a 119	120 a 129	130 a 139	140 a 149	150 a 159	160 a 169	170 a 179	180 a 189	190 a 199	200 a 209	210 a 219	220 a 229	230 a 239	240 a 249	250 a 259	260 a 269	270 a 279	280 a 289	290 a 299	300 a 309	310 a 319	320 a 329	330 a 339	340 a 349	350 a 359	360 a 369	370 a 379	380 a 389	390 a 399	400 a 409
Acidentes	9	5	14	9	4	13	16	16	20	18	9	23	15	13	9	8	14	26	12	11	14	8	21	10	15	15	16	129	34	16	29	10	19	16	9	20	15	29	17	24	35
Feridos	5	0	7	6	2	2	7	36	11	7	7	21	20	10	7	10	4	12	12	11	11	7	14	17	12	16	8	110	14	3	23	0	27	14	6	8	12	36	21	9	26
Mortos	0	0	0	3	4	3	0	12	3	2	1	0	0	1	1	0	1	4	7	3	0	0	4	4	1	1	2	1	3	1	5	3	2	1	2	0	1	9	0	6	1



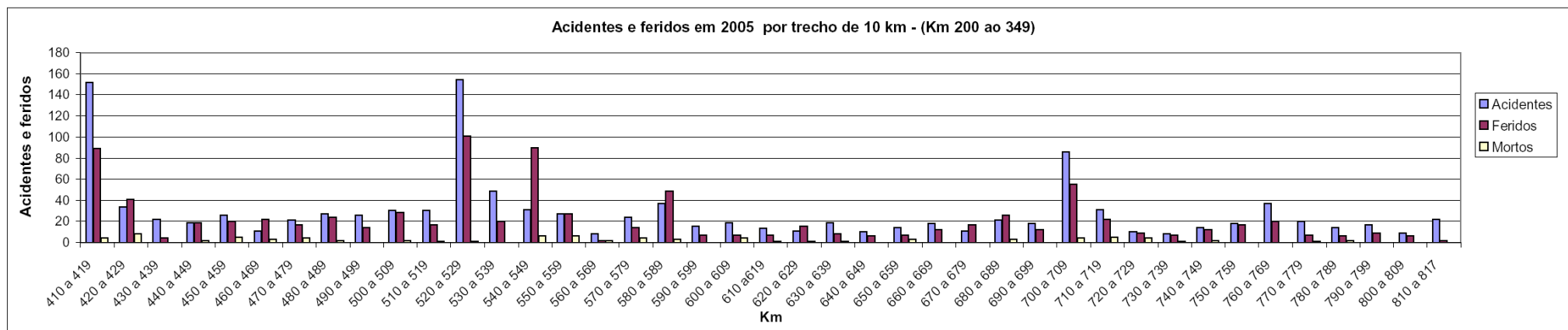
Km	0 a 9	10 a 19	20 a 29	30 a 39	40 a 49	50 a 59	60 a 69	70 a 79	80 a 89	90 a 99	100 a 109	110 a 119	120 a 129	130 a 139	140 a 149	150 a 159	160 a 169	170 a 179	180 a 189	190 a 199	200 a 209	210 a 219	220 a 229	230 a 239	240 a 249	250 a 259	260 a 269	270 a 279	280 a 289	290 a 299	300 a 309	310 a 319	320 a 329	330 a 339	340 a 349	350 a 359	360 a 369	370 a 379	380 a 389	390 a 399	400 a 409
Mortos	0	0	0	3	4	3	0	12	3	2	1	0	0	1	1	0	1	4	7	3	0	0	4	4	1	1	2	1	3	1	5	3	2	1	2	0	1	9	0	6	1



Rodovia BR 116 - MG

Acidentes ocorridos em 2005.

Km	410 a 419	420 a 429	430 a 439	440 a 449	450 a 459	460 a 469	470 a 479	480 a 489	490 a 499	500 a 509	510 a 519	520 a 529	530 a 539	540 a 549	550 a 559	560 a 569	570 a 579	580 a 589	590 a 599	600 a 609	610 a 619	620 a 629	630 a 639	640 a 649	650 a 659	660 a 669	670 a 679	680 a 689	690 a 699	700 a 709	710 a 719	720 a 729	730 a 739	740 a 749	750 a 759	760 a 769	770 a 779	780 a 789	790 a 799	800 a 809	810 a 817
Acidentes	152	34	22	19	26	11	21	27	26	30	30	154	49	31	27	8	24	37	15	19	13	11	19	10	14	18	11	21	18	86	31	10	8	14	18	37	20	14	17	9	22
Feridos	89	41	4	19	20	22	17	24	14	28	17	101	20	90	27	2	14	49	7	7	7	15	8	6	7	12	17	26	12	55	22	9	7	12	17	20	7	6	9	6	2
Mortos	4	8	0	2	5	3	4	2	0	2	1	1	0	6	6	2	4	3	0	4	1	1	1	0	3	0	0	3	0	4	5	4	1	2	0	0	1	2	0	0	0



Km	410 a 419	420 a 429	430 a 439	440 a 449	450 a 459	460 a 469	470 a 479	480 a 489	490 a 499	500 a 509	510 a 519	520 a 529	530 a 539	540 a 549	550 a 559	560 a 569	570 a 579	580 a 589	590 a 599	600 a 609	610 a 619	620 a 629	630 a 639	640 a 649	650 a 659	660 a 669	670 a 679	680 a 689	690 a 699	700 a 709	710 a 719	720 a 729	730 a 739	740 a 749	750 a 759	760 a 769	770 a 779	780 a 789	790 a 799	800 a 809	810 a 817
Mortos	4	8	0	2	5	3	4	2	0	2	1	1	0	6	6	2	4	3	0	4	1	1	1	0	3	0	0	3	0	4	5	4	1	2	0	0	1	2	0	0	0

